

**Tam Fairlie,** BA AADip RIBA PGCTLA

Upper Canada College  
BA Trinity College University of Toronto  
AA Dip Architectural Association School  
RIBA Part III (1988) PGCTLA, UEL

**Professional Experience:**

1995 - present Zeidler Partnership Architects UK

**Director of Zeidler UK since 1998**

**Background**

Trained at the Architectural Association School, London, I have had over 25 years experience working in corporate architectural practice, principally in the UK. During the last fourteen years I have been director of the Zeidler UK office and have had overall responsibility for design development and set up of the Zeidler UK projects. This has also included promotion, attracting of clients, procurement of staff and contract management.

**Skills**

Excellent analytical design skills.

A very hands on approach to design development.

A broad range of personal management skills including hiring, managing and mentoring staff.

A wide range of graphic and presentation skills and competent in most graphics and CAD programmes. (Our London office has been AutoCad based with an expanding interest in AutoDesk Revit Building Information Modelling)

**Interests**

Sustainability design issues

Sustainable design of Tall Buildings

Design of education buildings

Advances in Glass Technology in building

Building Information Modelling

The Hydrogen economy

**Languages**

English, French, Spanish, basic Arabic

**Citizenship** Canadian / UK

**Principal Projects:**

**Zeidler UK** has been set up to undertake large scale commercial projects from a London base. During my years as director since 1998 ZPA has undertaken a major retail project, Canada Place, in Canary Wharf, three major residential and commercial projects in London's West End, and a number of hotel renovations. As director I have built up our City office to 12 staff at peak to resource these projects. I have also worked to set up joint-ventures to respond to PFI and BSF initiatives.

**Silver City House - Knightsbridge London** - A residential block of 29 apartments and retail in Brompton Road - completion 2008 - value £ 22 M

**70 Brompton Road, office and retail building** - A seven storey office building over three levels of retail in a key London location opposite Harrods - completed 2007 - value £26 M

**10 Lancelot Place** - A residential block of 52 apartments, health club, parking garage in Knightsbridge London - completed 2008 - value £49 M

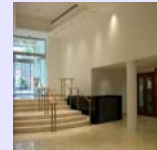
**DS8 (Canada Place) - Canary Wharf** - ZPA team design architects for external envelope and common parts of this mixed use building including 200,000 sq ft of Waitrose Food and Home retail space and a Reebok sports club.- completed 2003.- value £47 M



DS8 Canary Wharf 2002



Knightsbridge - 10 Lancelot Place



Office Atrium Interiors



Office Retail Building - 70 Brompton Road SW3



Silver City House Apartments - London SW3

## Other Key Projects:

*Zeidler Architects Education (ZAe) Set up a joint venture with a local architect with BSF and LSE funding experience to undertake Educational projects under the BSF and Academies programmes:*

*Following approximately twenty OJEU proposal calls, ZAe shortlisted on the following:*

*West Thames College  
Havering College  
Writtle Agricultural College*

**Canary Wharf - Canada Square Mall** - detailed study for Canary Wharf Ltd including proposals for an underground mall containing retail anchors and a cineplex to link four major towers and wintergardens on Heron Quays.

**Shell Centre, London** - detailed design proposals for Shell International - a 600,000 sq ft refurbishment to enclose the courtyard under a glass roof to include retail, cineplex, a health club and centre for the British Music Museum. A hotel is proposed over the air rights of the adjacent parking garage.

**Knightsbridge Green, London** - detailed planning permission for development of mixed use retail, office and residential scheme for Prudential Portfolio Managers in a 900,000 sq ft development in Knightsbridge.

**Chelsea Barracks PFI Proposal**, consortium with Brown and Root, Lehman Bros., Coopers & Lybrand, BAe, Ballast Wiltshier and Knight Frank.

**Hammersmith Town Hall Redevelopment** - mixed use retail and leisure development proposal.

**Tenerife Cruise Liner Retail Terminal Proposal** - 300,000 sq ft port retail facility, and offices

## Smaller Scale Projects

1995-2005 Residential Projects - Residential construction and renovation of houses for Derek Shaw, Senders/Crichton-Harris, Piers Haggard, Tuzo Wilson, Charles Pierce, William Lambert, Brockton Co-op, Peter Loose, Mark Eisenberg, Schellenberg/Fairlie

1993-1994 Design Architect, Bank of China, Toronto

1992-1993 Project Architect, Ministry of Environment Renovations

1989-1992 Design/Project Architect, Ryerson Student Residence, Toronto

1985-1987 Becton Dickinson Pharmaceutical Production Facility, Plymouth,

1986-1988 St Lukes Hospice, Devon

1986-1990 Golden Seddon Film Studios, Clerkenwell

## Professional Interests and Activities:

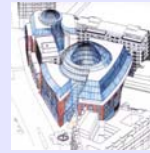
2002 Post Graduate Certificate in Teaching and Learning in Architecture (PGCTLA) from University of East London  
Guest critic at East London, Canterbury, Kingston  
Guest lecturer on Glass Technologies in Building at UEL

*Ecology Planning for Pointe au Baril, Georgian Bay Woodlands - "The Caravanserai"*

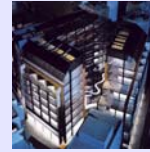
*Interest in Architectural Glass Art and Glass Artists*

## Other Interests:

*Tennis, Squash, Sailing  
Linguistics  
Publishing - duX Press Micro Press  
Chamber music group - The Cocktail*



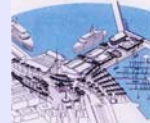
Inuktuk-Pointe au Baril



Knightsbridge Green



Shell Centre SouthBank



Tenerife Port Project



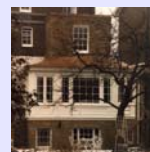
Ryerson Residence



Bank of China, Toronto



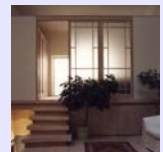
Lambert House



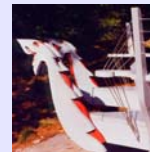
Haggard House



The Caravanserai



Shaw House



Pagoda, Pointe au Baril

