



FAIRWOOD ISLAND - INSECT NOTES

There are many types of

T *Tent Caterpillars*

A *Pine Aphids Farmed by Ants*

******* *Other*

******* *Other*



Tent Caterpillar - migration pathway



Tent Caterpillars on Pin Cherries in June



Infestation - Pine Aphids visible on white pines, related to Pine Rust disease



*Tent Caterpillar - on black cherry, pin cherry and chokecherries
heavy infestation - Spring 2002*



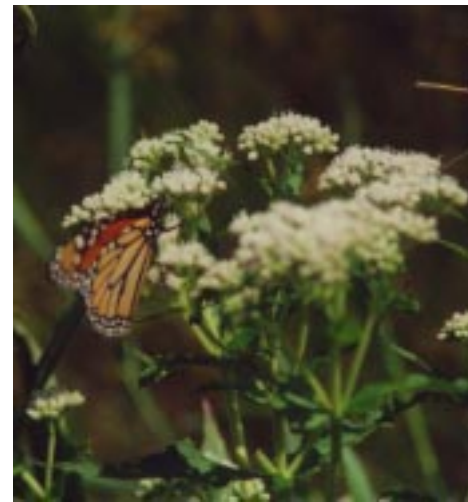
Bee on Elderflower



Perforation pattern of pine bark



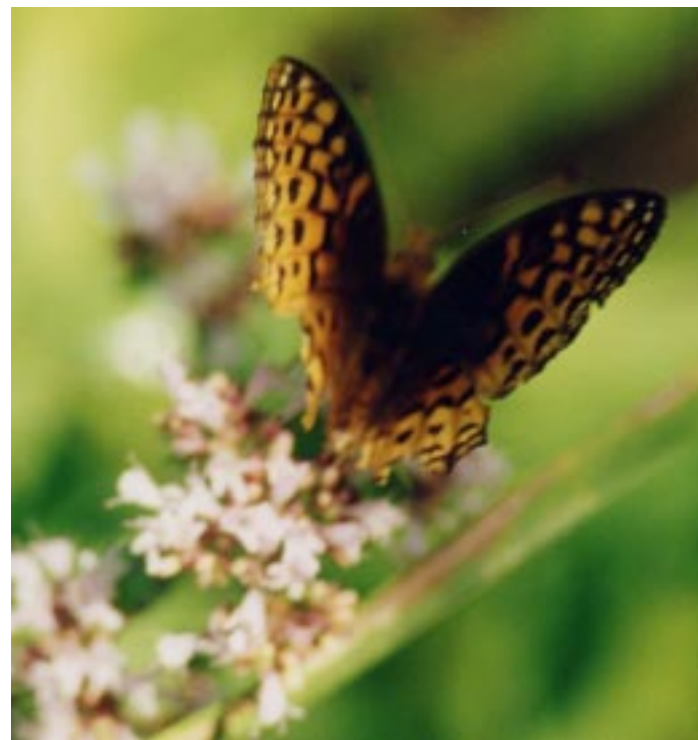
Great Fritillary



Monarch - attracted to boneset in Archers Bay in mid August - prior to migration to Mexico



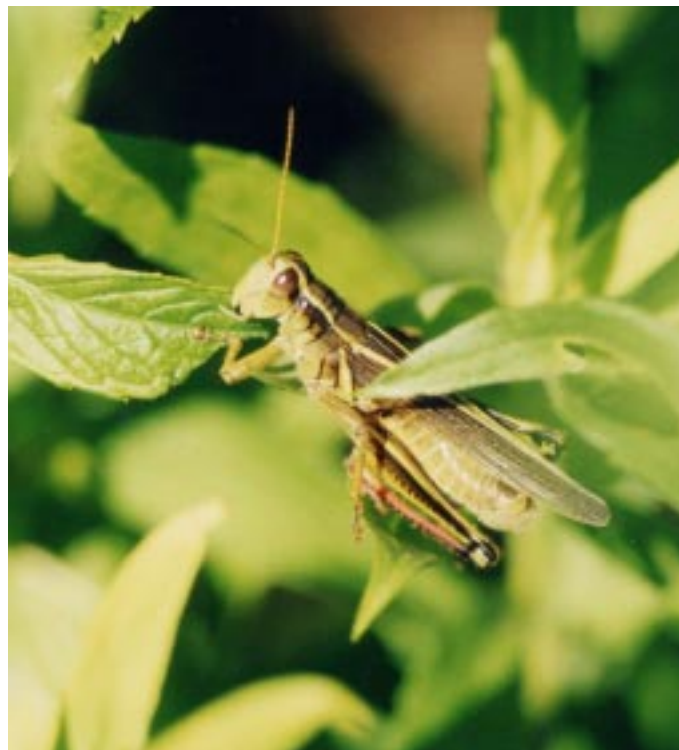
Monarch



Butterflies in July and August



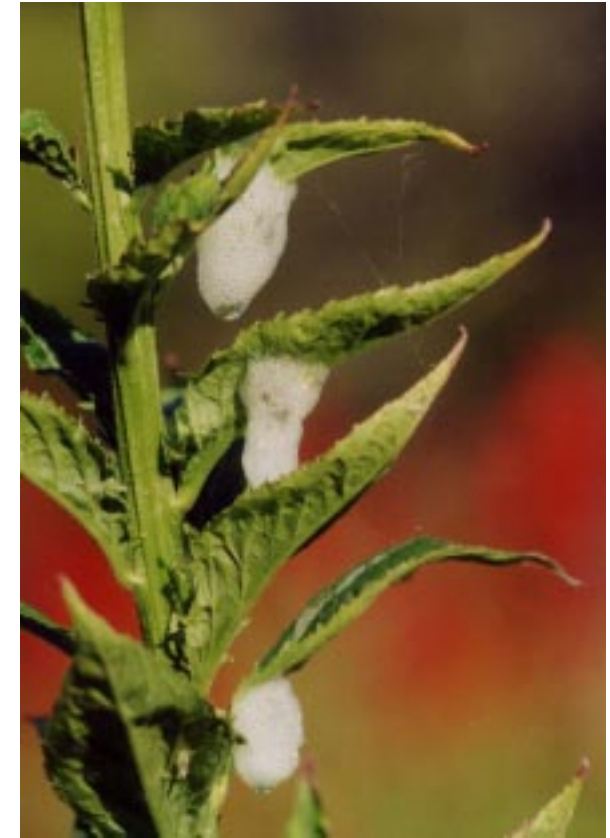
Tiny Mites on Oak Leaves



*Grasshoppers appear in cycles
2001 August produced a great number of green
grasshoppers, wich have tended to be less com-
mon in other years.*



*Caterpillar stage of Gypsy Moth prior to making
cocoon??*



Insect Spume on Boneset in Mid June

*the green aphid like insect can be observed at work by dipping the boneset in water to wash away the nest leaving the insect exposed
- within minutes this insect will create a new bubble enclosure*